

UGL REGIONAL LINX



Baal Bone Junction
CNLA-240

LINKING
COMMUNITIES.

CONNECTING
CUSTOMERS.

Document Control

Approval

Version	Date Reviewed	Prepared by	Reviewed by	Approved
1.0	30 January 2022	Manager Network Rules and Procedures	Train Control Manager	Network Operations Manager

Revision Details

Version	Date Reviewed	Issue Date	Revision Description
1.0		30 January 2022	Initial Issue

Contact information

Network Control Board	Normal Call	Priority Call	Emergency Call	Backup Number	Public Free Call
North West	02 4028 9501	02 4028 9521	02 4028 9541	02 4028 9671	1800 643 373
South West	02 4028 9502	02 4028 9522	02 4028 9542	02 4028 9672	1800 021 914
West	02 4028 9504	02 4028 9524	02 4028 9544	02 4028 9674	1800 427 198

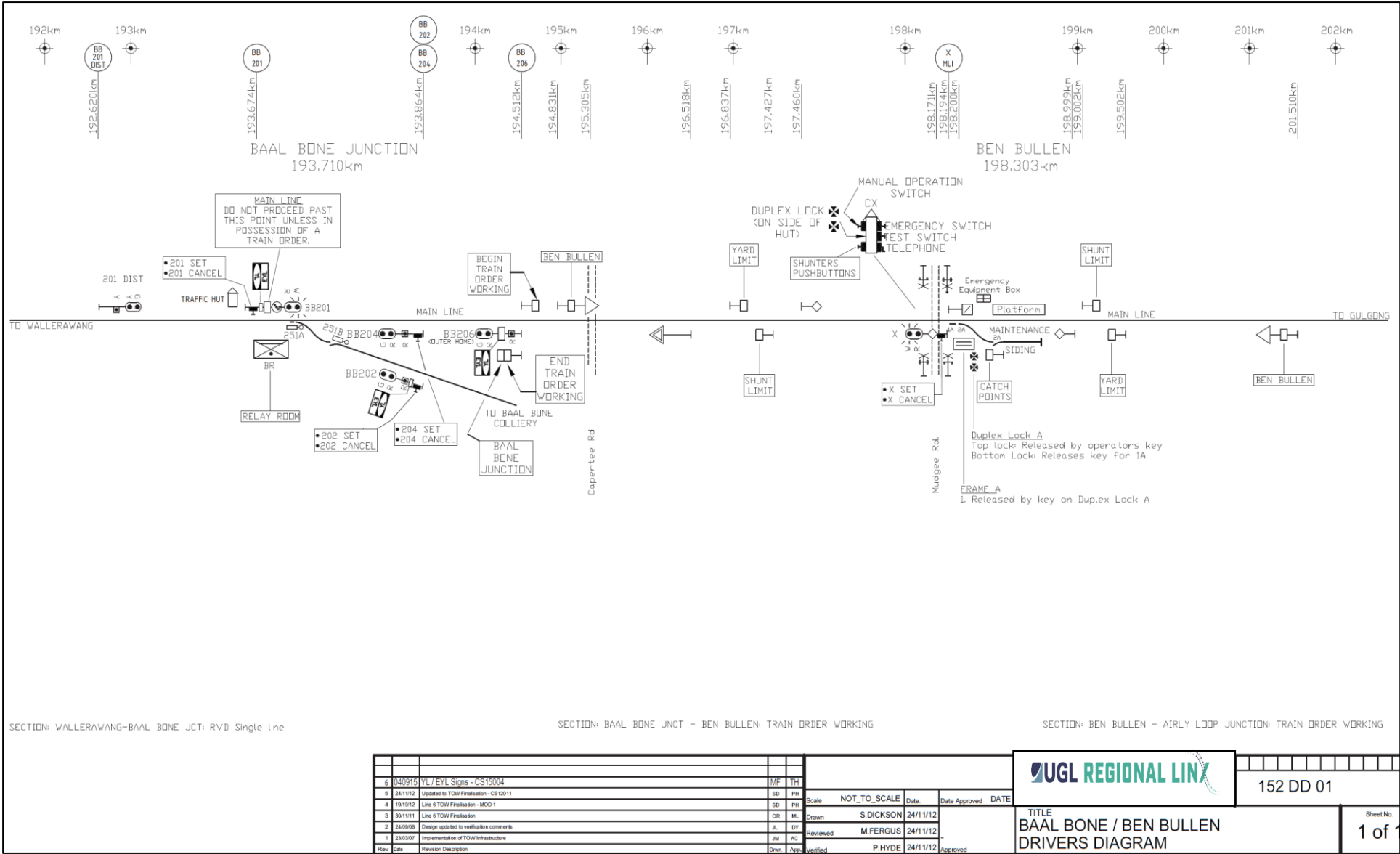
NOTE: For emergency use only, you can call 1800 547 276 from any phone.

All relevant publications are available on the UGL Regional Linx CRN website www.uglregionallinx.com.au

Disclaimer. This document was prepared for use on the CRN Network only. UGL Regional Linx makes no warranties, express or implied, that compliance with the contents of this document shall be sufficient to ensure safe systems or work or operation. It is the document user's sole responsibility to ensure that the copy of the document it is viewing is the current version of the document as in use by UGLRL. UGLRL accepts no liability whatsoever in relation to the use of this document by any party, and UGLRL excludes any liability which arises in any manner by the use of this document.

Copyright. The information in this document is protected by Copyright and no part of this document may be reproduced, altered, stored or transmitted by any person without the prior consent of UGLRL.

Wallerawang to Rylstone
Baal Bone Junction
193.710 km



General arrangements

Baal Bone Junction is a Rail Vehicle Detection location.

Begin and End Train Orders

Up END TRAIN ORDER WORKING 194.512 km - Rylstone to Baal Bone Junction.

Down BEGIN TRAIN ORDER WORKING 194.512 km - Baal Bone Junction to Rylstone.

Down MAIN LINE DO NOT PROCEED PAST THIS POINT UNLESS IN POSSESSION OF A TRAIN ORDER on signal BB201.

Yard Limits

Main line YARD LIMIT / END YARD LIMIT on signal BB201 at 193.674 km.

Baal Bone Loop YARD LIMIT / END YARD LIMIT on signal BB202 at 193.864 km.

Main line YARD LIMIT / END YARD LIMIT on signal BB206 at 194.512km.

Operation of Points

251A powered points from the Main to Baal Bone balloon loop are controlled by CRN Network Control. If these points fail to operate correctly, they may need to be manually operated, and must be done in accordance with “CNPR740, Responding to Faulty Points”.

Stabling rail vehicles

If rail vehicles are stabled at this location, catchpoints or a derail must be set to prevent a runaway accessing a running line. Access to the private siding is by negotiation with the siding owner.

Train Working between Baal Bone Junction and Ben Bullen

A Train Order is the Authority for rail traffic movements between Baal Bone Junction and Ben Bullen.



NOTE

- Rail traffic crew must be in possession of a Train Order prior to requesting clearance of signal BB201.
- CRN Network Control must ensure rail traffic possess the correct Authority prior to clearing signal BB201.