

UGL REGIONAL LINX



Walgett
CNLA-468

LINKING
COMMUNITIES.

CONNECTING
CUSTOMERS.

Document Control

Approval

Version	Date Reviewed	Prepared by	Reviewed by	Approved
1.0	30 January 2022	Manager Network Rules and Procedures	Train Control Manager	Network Operations Manager

Revision Details

Version	Date Reviewed	Issue Date	Revision Description
1.0		30 January 2022	Initial Issue

Contact information

Network Control Board	Normal Call	Priority Call	Emergency Call	Backup Number	Public Free Call
North West	02 4028 9501	02 4028 9521	02 4028 9541	02 4028 9671	1800 643 373
South West	02 4028 9502	02 4028 9522	02 4028 9542	02 4028 9672	1800 021 914
West	02 4028 9504	02 4028 9524	02 4028 9544	02 4028 9674	1800 427 198

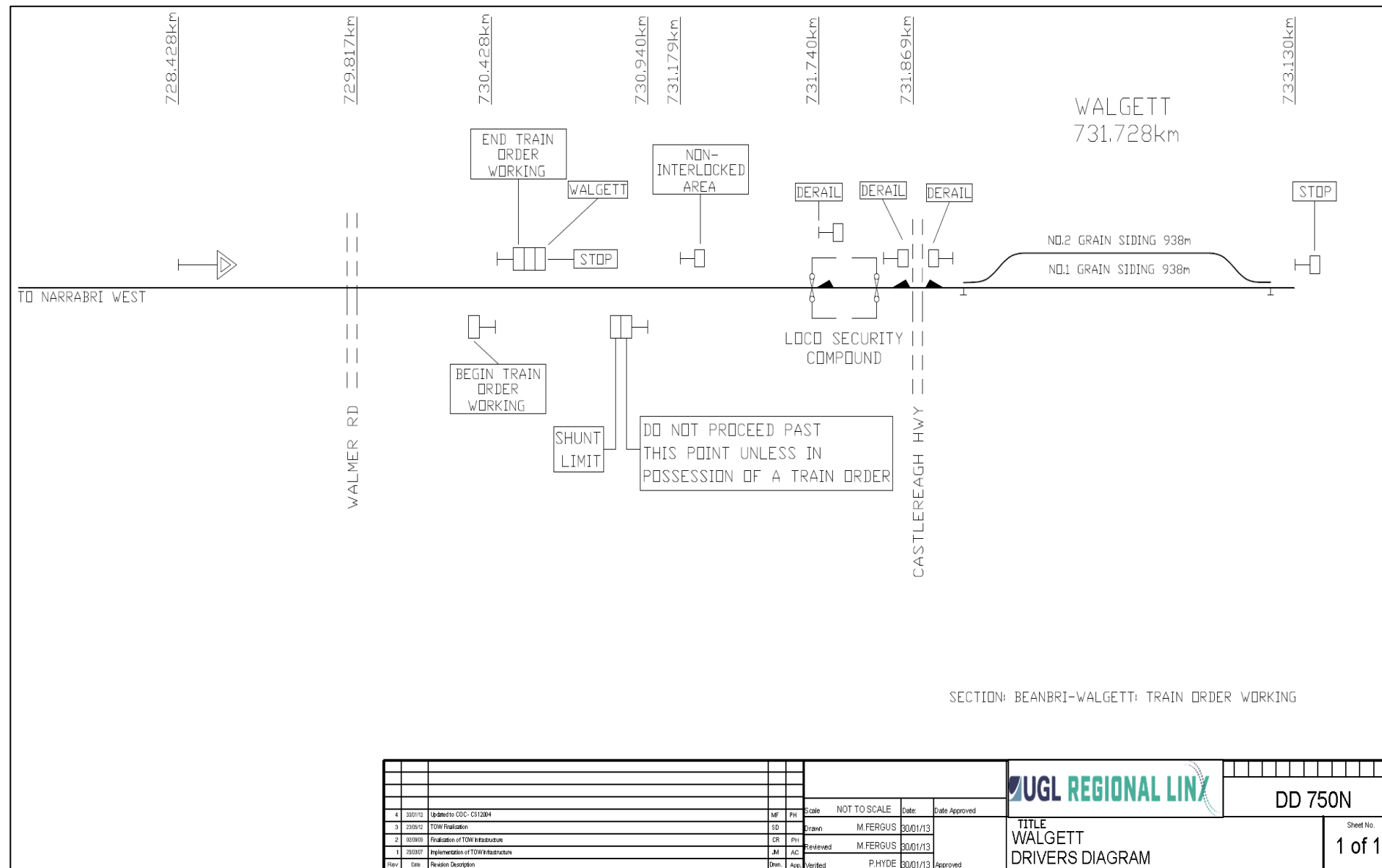
NOTE: For emergency use only, you can call 1800 547 276 from any phone.

All relevant publications are available on the UGL Regional Linx CRN website www.uglregionallinx.com.au

Disclaimer. This document was prepared for use on the CRN Network only. UGL Regional Linx makes no warranties, express or implied, that compliance with the contents of this document shall be sufficient to ensure safe systems or work or operation. It is the document user's sole responsibility to ensure that the copy of the document it is viewing is the current version of the document as in use by UGLRL. UGLRL accepts no liability whatsoever in relation to the use of this document by any party, and UGLRL excludes any liability which arises in any manner by the use of this document.

Copyright. The information in this document is protected by Copyright and no part of this document may be reproduced, altered, stored or transmitted by any person without the prior consent of UGLRL.

731.728 km



General arrangements

Walgett is a Yard Working Location.

Loop and siding lengths can be found in the TOC Manual Northern Section Pages.

Begin and End Train Orders

Down STOP/END TRAIN ORDER WORKING 730.428 km.

Up BEGIN TRAIN ORDER WORKING 730.428 km.

Yard limits

STOP 730.428 km. Rail traffic must STOP at this sign and not pass until authorised by CRN Network Control.

LANDMARK 728.428.

Shunting limits

Up SHUNT LIMIT 730.940 km.

Stabling rail vehicles

If rail vehicles are stabled at this location, catchpoints or a derail must be set to prevent a runaway accessing a running line.

Locomotive compound

An enclosed compound is provided between the former staff hut and Castlereagh Highway level crossing.

When locomotives are stabled in the compound, the gates must be secured with an SL lock.

Yard working arrangements of Walgett

Walgett must be worked in accordance with Country Network Standard – CNS 003 Yard Working in Country Regional Network.